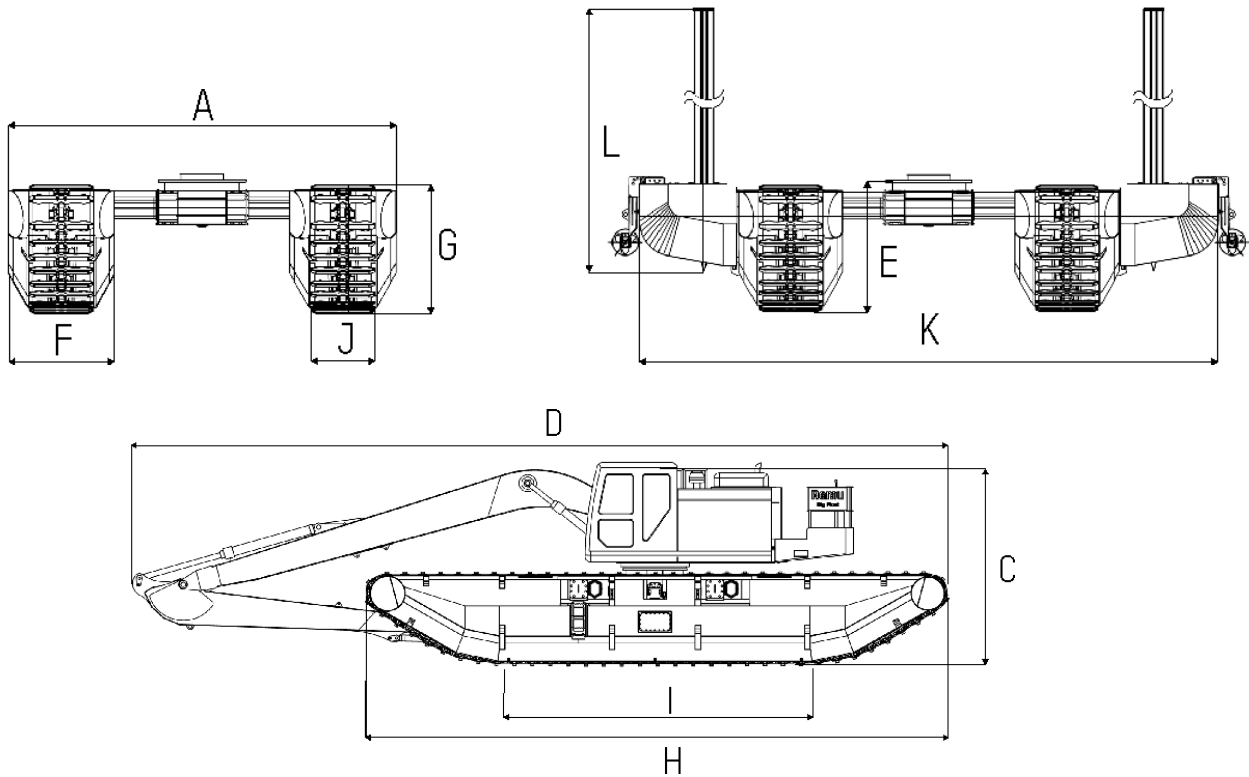


## Big Float E35



### ASSEMBLED UNIT

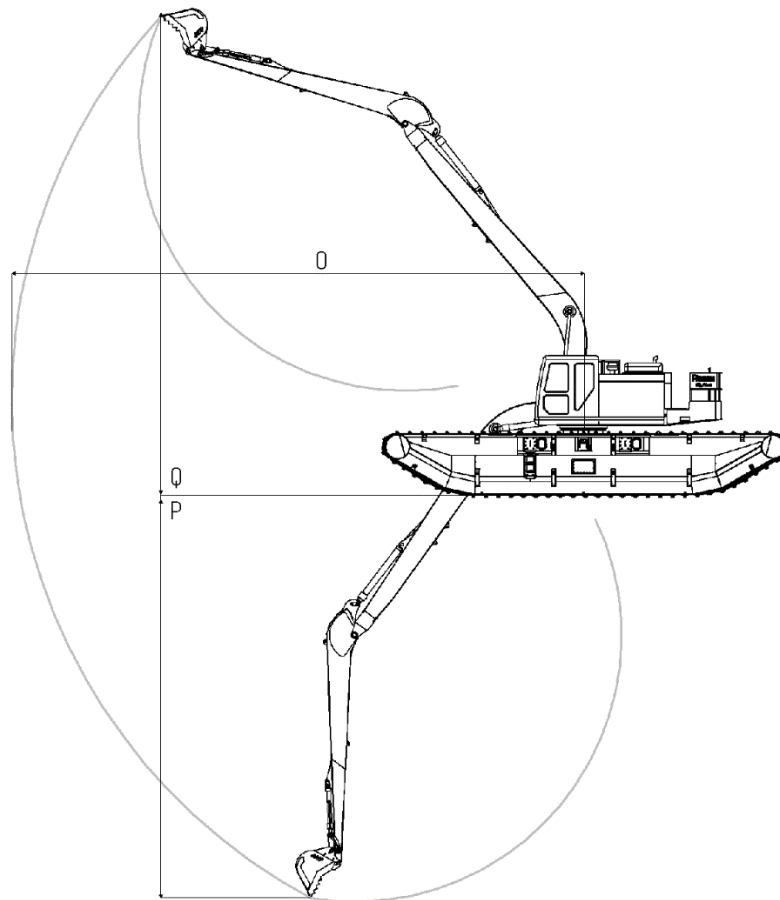
	METRIC	IMPERIAL
GROSS WEIGHT *1	45 000 kg	99 600 lbs
A. WORKING WIDTH	6 180 mm	20 ft 4 "
C. OVERALL HEIGHT *1	4 060 mm	13 ft 4 "
D. OVERALL LENGTH *1	17 330 mm	56 ft 10 "
E. UNDERCARRIAGE HEIGHT WITH ADAPTER RING	1 950 mm	6 ft 7 "

### SINGLE PONTON

F. OVERALL WIDTH	2 010 mm	6 ft 7 "
G. OVERALL HEIGHT	1 900 mm	6 ft 2 "
H. OVERALL LENGTH	11 860 mm	38 ft 11 "
I. TRACK LENGTH ON GROUND	7 000 mm	23 ft
J. TRACK PAD LENGTH	1 530 mm	5 ft

### OPTIONAL ITEMS

K. WORKING WIDTH (WITH ADDITIONAL PONTOONS MAX)	9 380 mm	30 ft 9 "
L. ANCHORING LEGS LENGTH	6 000 mm	19 ft 8 "
M. SWING RADIUS (COUNTERWEIGHT WITH LOAD BAY AND IN-BUILT FUEL TANK)	3 700 mm	12 ft 2 "



## WORKING RANGE

- N. MAXIMUM REACH AT GROUND LEVEL \*<sup>1</sup>
- O. MAXIMUM DIGGING DEPTH \*<sup>1</sup>
- P. MAXIMUM CUTTING HEIGHT \*<sup>1</sup>

## METRIC

- 18 300 mm
- 14 000 mm
- 15 700 mm

## IMPERIAL

- 60 ft
- 45 ft 11 "
- 51 ft 6 "

\*<sup>1</sup>) Estimated numbers based on average 30 ton class base excavator and 60 ft. long front boom details

**CONSTRUCTION:** Big Float manufactured with high strength wear resistant steel for the best protection against external stress and impacts. Each pontoon has five watertight sections with manhole access on top of the pontoon. Carefully engineered shape and measurement of the undercarriage maximizes its stability in various job environments.

**TRACK SYSTEM:** Big Float durable track system, utilizing standard excavator track chains and track rollers, provides unbeatable lifetime of wear parts and eliminates chances of unpredictable breakdown.

**TRAVEL MOTORS,** paired with planetary final drives, deliver high torque through drive sprockets directly to track chains, eliminating need for unreliable components.