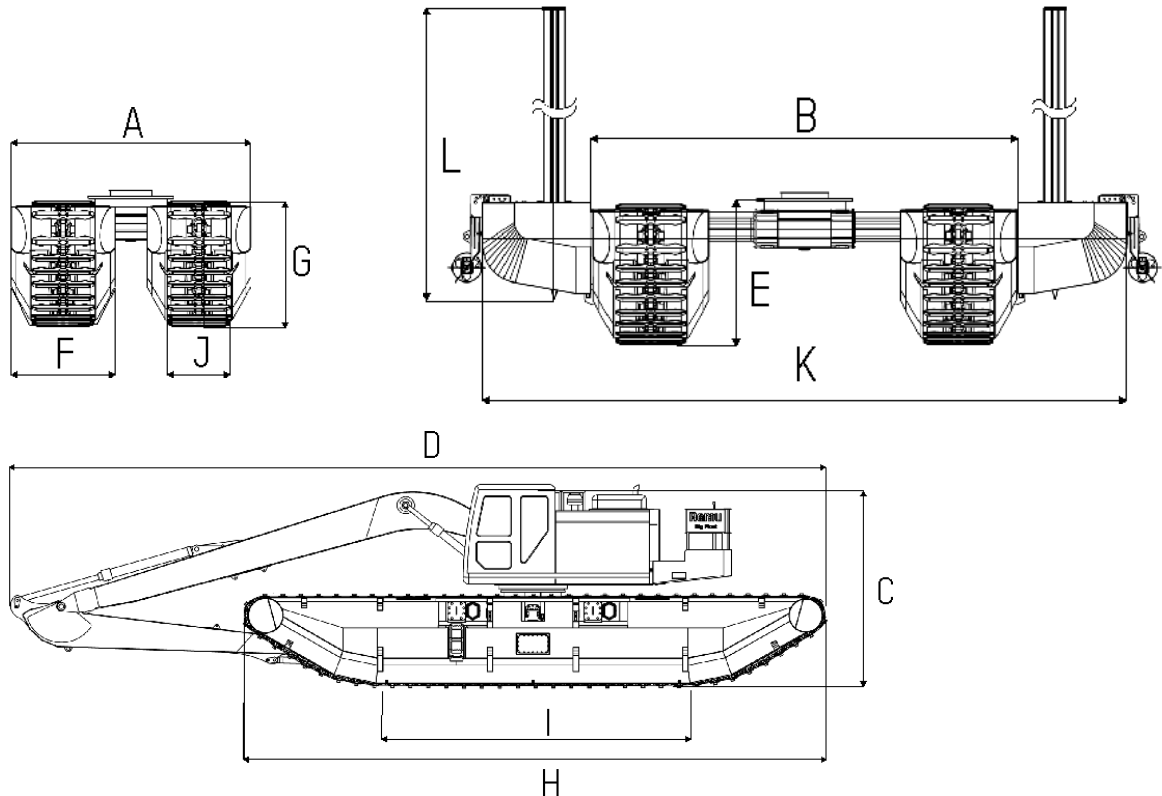


Big Float E22



ASSEMBLED UNIT

	METRIC	IMPERIAL
GROSS WEIGHT *1	36 000 kg	79 650 lbs
A. TRANSPORT WIDTH (MIN)	3 500 mm	11 ft 6 "
B. WORKING WIDTH (MAX)	5 500 mm	18 ft 1 "
C. OVERALL HEIGHT *1	3 900 mm	12 ft 10 "
D. OVERALL LENGTH *1	16 000 mm	52 ft 6 "
E. UNDERCARRIAGE HEIGHT WITH ADAPTER RING	1 900 mm	6 ft 3 "

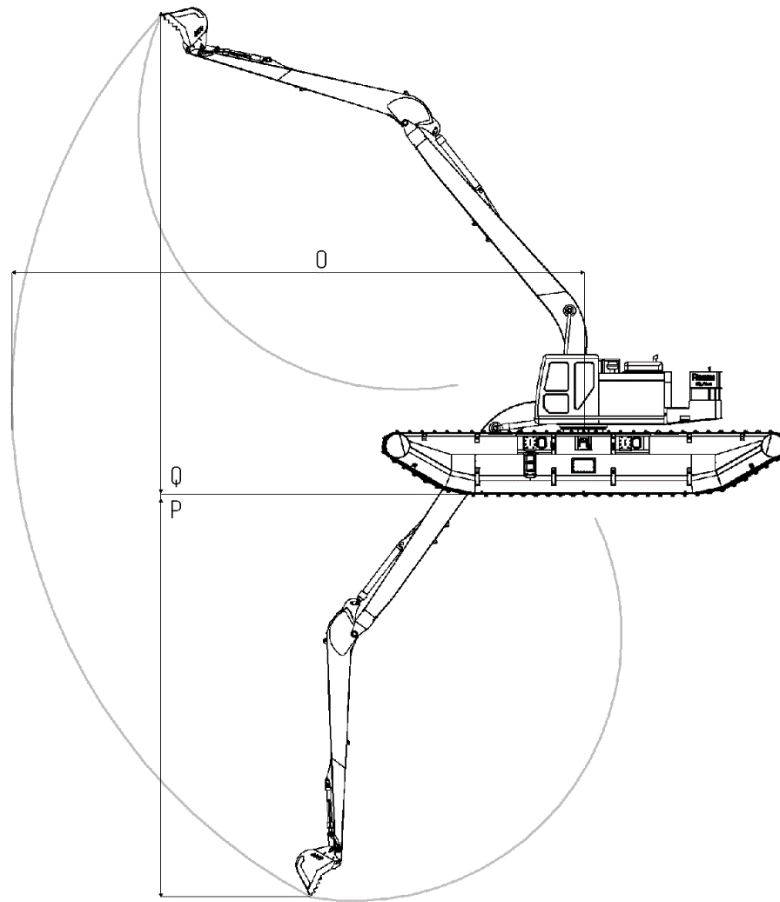
SINGLE PONTOON

F. OVERALL WIDTH	1 500 mm	4 ft 11 "
G. OVERALL HEIGHT	1 800 mm	5 ft 11 "
H. OVERALL LENGTH	11 200 mm	36 ft 9 "
I. TRACK LENGTH ON GROUND	6 000 mm	19 ft 8 "
J. TRACK PAD LENGTH	900 mm	3 ft

OPTIONAL ITEMS

K. WORKING WIDTH (WITH ADDITIONAL PONTOONS MAX)	8 340 mm	27 ft 5 "
L. ANCHORING LEGS LENGTH	6 000 mm	19 ft 8 "
M. SWING RADIUS (COUNTERWEIGHT WITH LOAD BAY AND IN-BUILT FUEL TANK)	3 800 mm	12 ft 6 "

*1) Estimated numbers based on average base excavator and long front boom details



WORKING RANGE

- N. MAXIMUM REACH AT GROUND LEVEL *¹
- O. MAXIMUM DIGGING DEPTH *¹
- P. MAXIMUM CUTTING HEIGHT *¹

METRIC

- 15 500 mm
- 11 500 mm
- 14 300 mm

IMPERIAL

- 50 ft 10 "
- 37 ft 9 "
- 46 ft 11 "

*¹) Estimated numbers based on average base excavator and long front boom details

CONSTRUCTION: Big Float manufactured with high strength wear resistant steel for the best protection against external stress and impacts. Each pontoon has five watertight sections with manhole access on top of the pontoon. Carefully engineered shape and measurement of the undercarriage maximizes its stability in various job environments.

TRACK SYSTEM: Big Float durable track system, utilizing standard excavator track chains and track rollers, provides unbeatable lifetime of wear parts and eliminates chances of unpredictable breakdown.

TRAVEL MOTORS, paired with planetary final drives, deliver high torque through drive sprockets directly to track chains, eliminating the need for unreliable components.